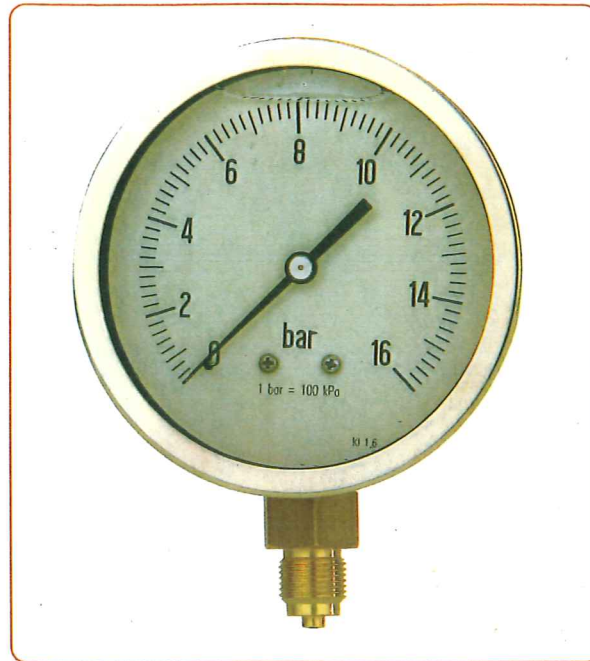


Type 75 Glycerine Filled Pressure Gauges



Intended Service

These Gauges are widely used in the hydraulics and sprinkler industries due to their robust waterproof construction, with the added advantage of being able to cope with pulsation and mechanical vibration thus sustaining a long service life.

| | |
|------------------------------|---|
| Normal Sizes | 50, 63, 80 and 100mm |
| Accuracy class | ± 1.6% Maximum Scale Value EN 837:1998 |
| Design | EN 837:1998 |
| Scale Ranges | -1 to 1000 bar or equivalent other units of pressure or vacuum. |
| Working Pressure | Steady: 3/4 of full scale value Fluctuating: 2/3 of full scale value Short time: Full scale value |
| Operating Temperature | Ambient: TMIN -25 to TMAX +60 °C Medium: TMAX +60 °C |
| Temperature Error | Additional error when temperature of the pressure element deviates from +20 °C Rising temperature: +0.3%/10 °C Falling temperature: -0.3%/10 °C Percentage of the true scale value |

STANDARD FEATURES

| | |
|-----------------------------|--|
| Pressure Connections | Radial or back entry Material: Brass |
| Pressure element | Material: Phosphor Bronze up to 40 Bar, Stainless Steel up to 1000 Bar |
| Movement | Material: Brass, Nickel Silver Pinions and Arbors |
| Dial | Aluminium with black lettering on white. With Pointer stop pin |
| Pointer | Black aluminium pointer |
| Case | A.I.S.I 304 Stainless Steel with crimped bezel. |
| Window | Clear plastic |
| Optional extras | Special Dials |